

1	2	3	4	5	6	7	8	9	10	11	12	13	14	15	16
<div>REFERENCE</div> <div>REFERENCE. TITLE</div> <div>REFERENCE. No.</div>															
<div>NOTES</div>															
<div>LEGEND</div>															
<div>REV.</div> <div>DATE</div> <div>DESCRIPTION</div> <div>DESIGN</div> <div>DRAWN</div> <div>CHECKED</div> <div>APPROVED</div>															
<div>Client:</div> <div>Contractor:</div> <div>Consultant:</div> <div>Sub Contractor:</div>															
<div>Project:</div> <div>100MW Solar Power Plant</div> <div>(SARCHESHME)</div> <div>Title:</div> <div>GANTRY FOUNDATION DRAWING</div> <div>COVER SHEET</div>															
<div>DOC NO.:</div> <div>28P2-B-3MG-SUS-000000-CV-129</div> <div>SCALE</div> <div>SIZE</div> <div>AS SHOWN</div> <div>AS SHOWN</div> <div>1 OF 11</div> <div>FORMAT</div> <div>DWG</div>															

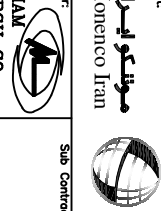


GANTRY STRUCTURE DRAWING

NO.SHEET	SUBJECT	REV		
		00	01	02
A-01	COVER SHEET			✓
A-02	INDEX			✓
A-03	LOCATION			✓
A-04	FRONT VIEW 2SCG1 & 2SCG2 & 2SBG1			✓
A-05	FRONT VIEW 2SCG3 & 2SCG4 & 2SBG2			✓
A-06	SINGLE LINE DRAWING OF GANTRY COLUMN TYPE 2SCG1			✓
A-07	SINGLE LINE DRAWING OF GANTRY COLUMN TYPE 2SCG2			✓
A-08	SINGLE LINE DRAWING OF GANTRY COLUMN TYPE 2SCG3			✓
A-09	SINGLE LINE DRAWING OF GANTRY COLUMN TYPE 2SCG4			✓
A-10	SINGLE LINE DRAWING OF GANTRY BEAM TYPE 2SBG1			✓
A-11	SINGLE LINE DRAWING OF GANTRY BEAM TYPE 2SBG2			✓

REFERENCE		15	16
REFERENCE: TITLE		REFERENCE: No.	
NOTES			

LEGEND

02	01/2026	ISSUE FOR APPROVAL	R.KHAKPOUR	R.KHAKPOUR F.NIKBAKHT	R.KHAKPOUR
01	01/2026	ISSUE FOR APPROVAL	R.KHAKPOUR	R.KHAKPOUR F.NIKBAKHT	R.KHAKPOUR
00	12/2025	ISSUE FOR APPROVAL	A.BARASTEH	A.BARASTEH F.NIKBAKHT	R.KHAKPOUR
REV.	DATE	DESCRIPTION	DESIGN	DRAWN	CHECKED
Client:			Consultant:		



Contractor:

Monenco Iran

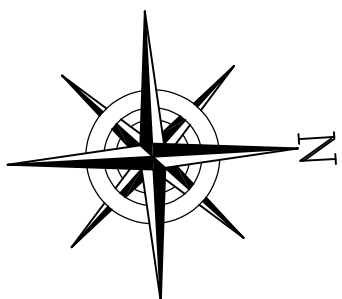
Sub Contractor:

MOHAM SHARGH CO.

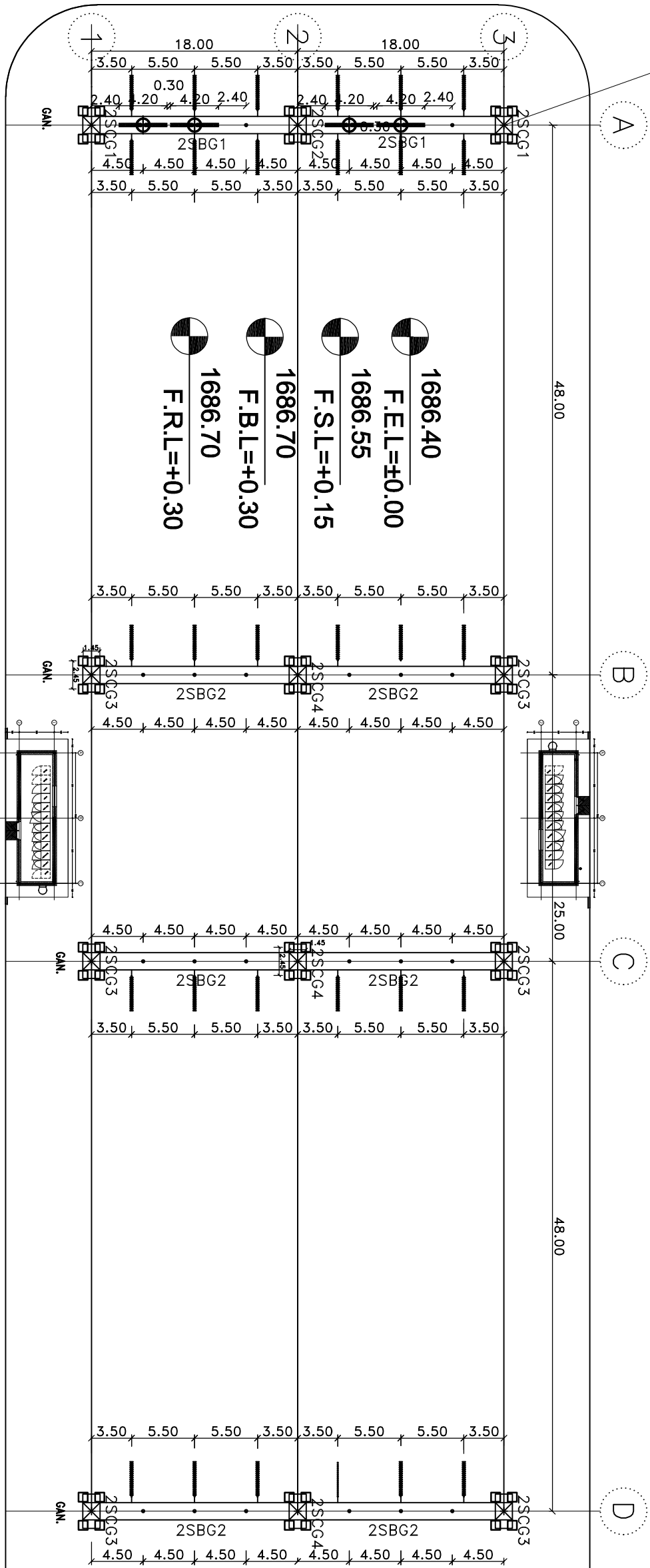
Project: 100MW Solar Power Plant (SARCHESHME)

Title: GANTRY FOUNDATION DRAWING INDEX

DOC NO.:	28P2-B-3MG-DWG-SUS-000000-CV-129	REV.	02
SCALE	SIZE	SHEET	FORMAT
AS SHOWN	A3	02 OF 11	DWG



X=426233.777
Y=3349523.877



NOTES

1-ALL DIMENSIONS AND LEVELS ARE IN "m"
2-THIS DOCUMENT HAS BEEN DESIGNED ACCORDING TO REV 02 OF LAYOUT.




F.B.L.(FINISHED BLOCK LEVEL):+0.30=1686.70
F.R.L.(FINISHED ROAD LEVEL):+0.30=1686.70
F.E.L=(FINISHED EARTH LEVEL):±0.00=1686.40
F.S.L=(FINISHED SAND LEVEL):+0.15=1686.55

⊕ : NEW STRUCTURE

☁ : HOLD

LEGEND

02	01/2026	ISSUE FOR APPROVAL	R.KHAKPOUR	R.KHAKPOUR F.NIKBAKHT	R.KHAKPOUR
01	01/2026	ISSUE FOR APPROVAL	R.KHAKPOUR	R.KHAKPOUR F.NIKBAKHT	R.KHAKPOUR
00	12/2025	ISSUE FOR APPROVAL	A.BARASTEH	A.BARASTEH F.NIKBAKHT	R.KHAKPOUR
REV.	DATE	DESCRIPTION	DESIGN	DRAWN	CHECKED
Client:			Consultant:		



Contractor:

MOHAMMAD SHARIGH CO.

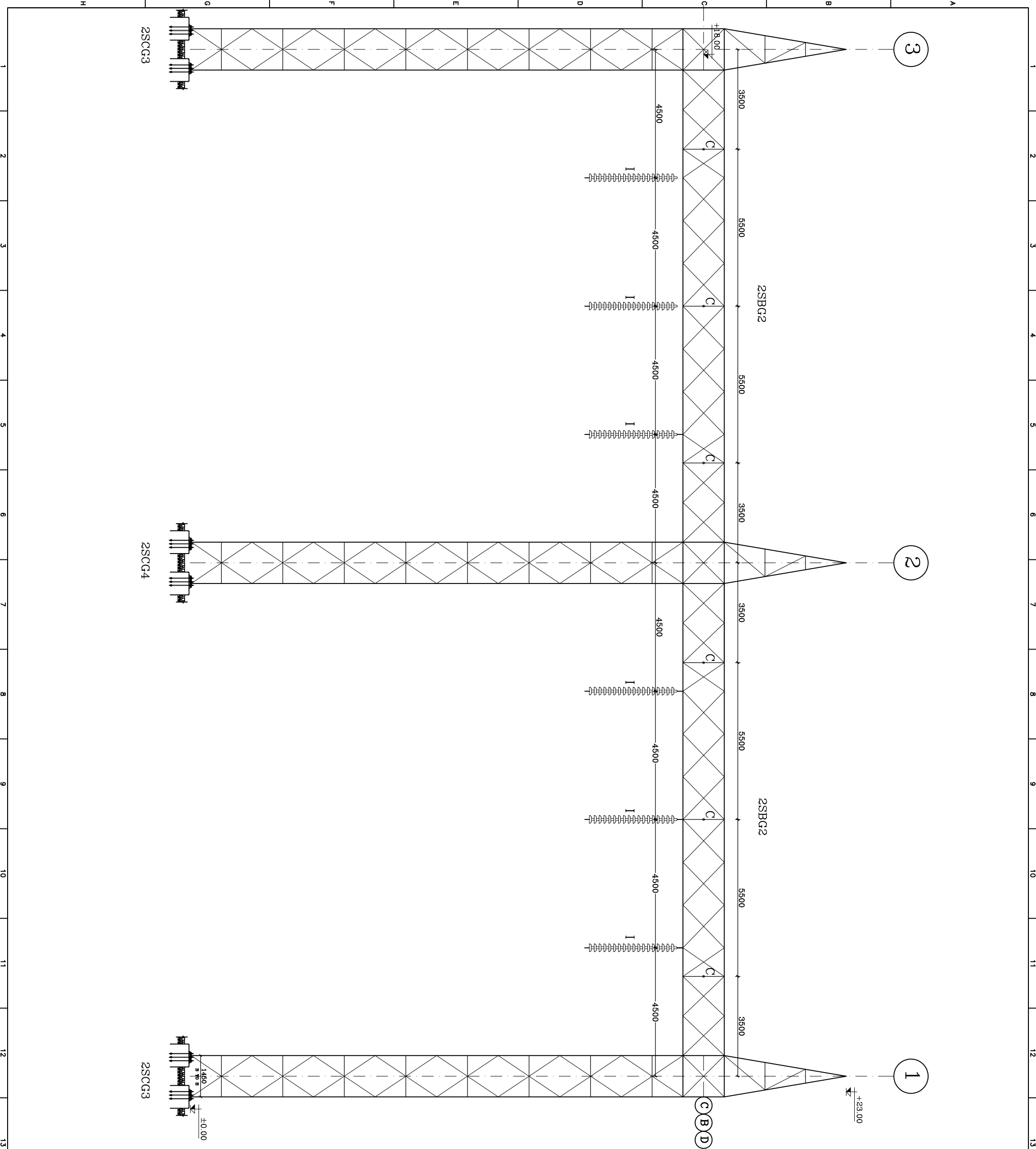
Sub Contractor:

Project: **100MW Solar Power Plant (SARCHESHME)**

Title: **GANTRY FOUNDATION DRAWING LOCATION**

DOC NO.: **28P2-B-3MG-DWG-SUS-000000-CV-129**

SCALE	SIZE	SHEET	FORMAT
1/440	A3	03 OF 11	DWG



REFERENCE		15	16
REFERENCE. TITLE		REFERENCE. No.	
NOTES			

1-ALL DIMENSIONS AND LEVELS ARE IN "m"
2-THIS DOCUMENT HAS BEEN DESIGNED ACCORDING TO REV 02 OF LAYOUT.

F.B.L(FINISHED BLOCK LEVEL):+0.30=1686.70

F.R.L(FINISHED ROAD LEVEL):+0.30=1686.70

F.E.L=(FINISHED EARTH LEVEL):±0.00=1686.40


F.S.L=(FINISHED SAND LEVEL):+0.15=1686.55

⊕ : NEW STRUCTURE


☁ : HOLD

LEGEND


02	01/2026	ISSUE FOR APPROVAL	R.KHAKPOUR	R.KHAKPOUR F.NIKBAKHT	R.KHAKPOUR
01	01/2026	ISSUE FOR APPROVAL	R.KHAKPOUR	R.KHAKPOUR F.NIKBAKHT	R.KHAKPOUR
00	12/2025	ISSUE FOR APPROVAL	A.BARASTEH	A.BARASTEH F.NIKBAKHT	R.KHAKPOUR
REV.	DATE	DESCRIPTION	DESIGN	DRAWN	CHECKED
Client:			Consultant:	APPROVED	




مومنکو ایران
Momenco Iran



شرآه
SHARAGH CO.



مومنکو ایران
Momenco Iran

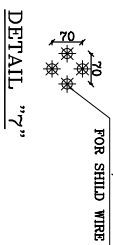
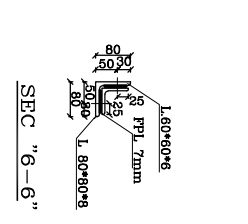
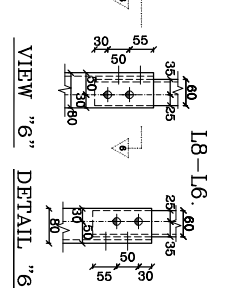
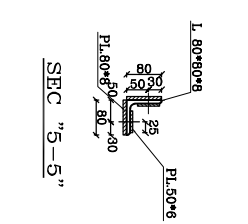
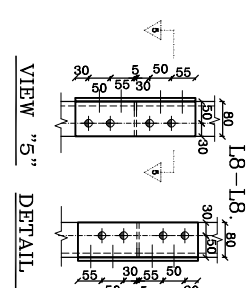
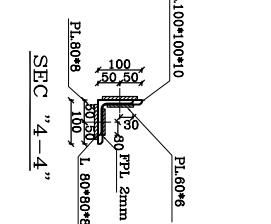
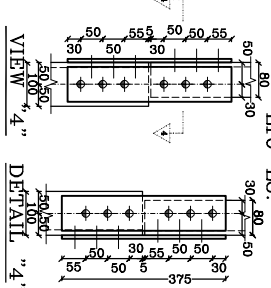
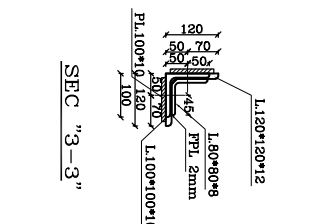
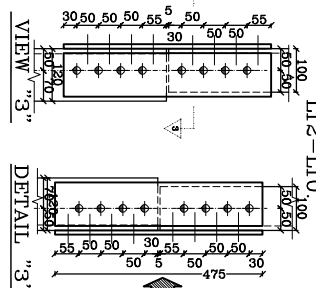
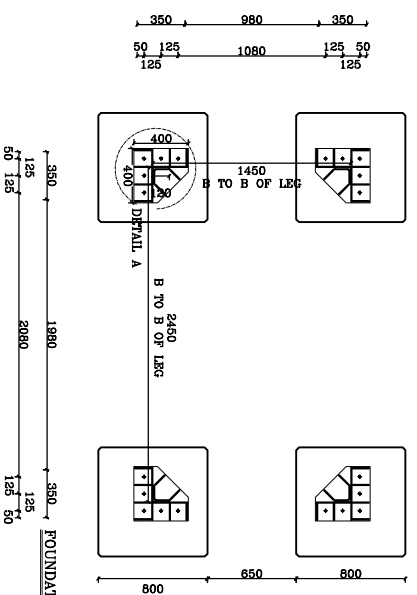
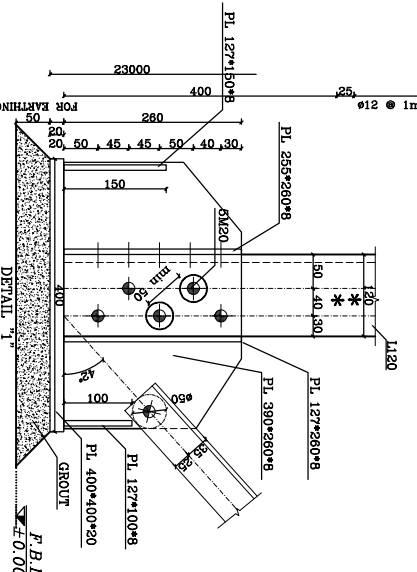
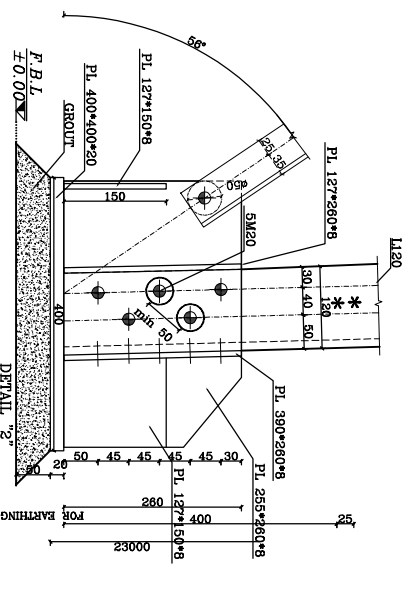
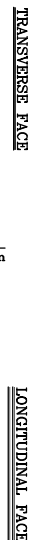
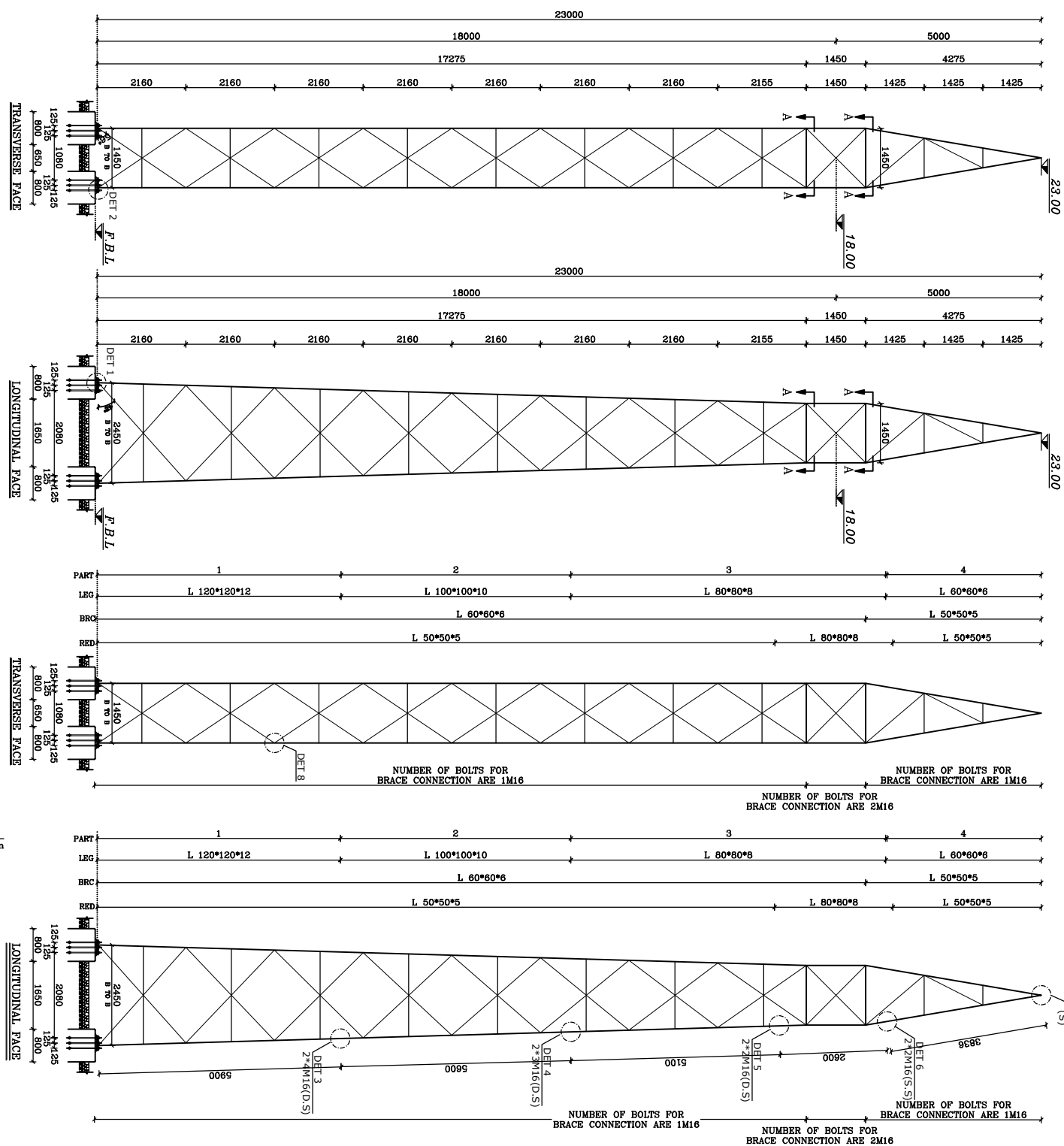
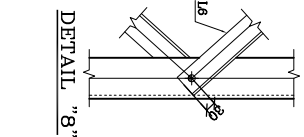
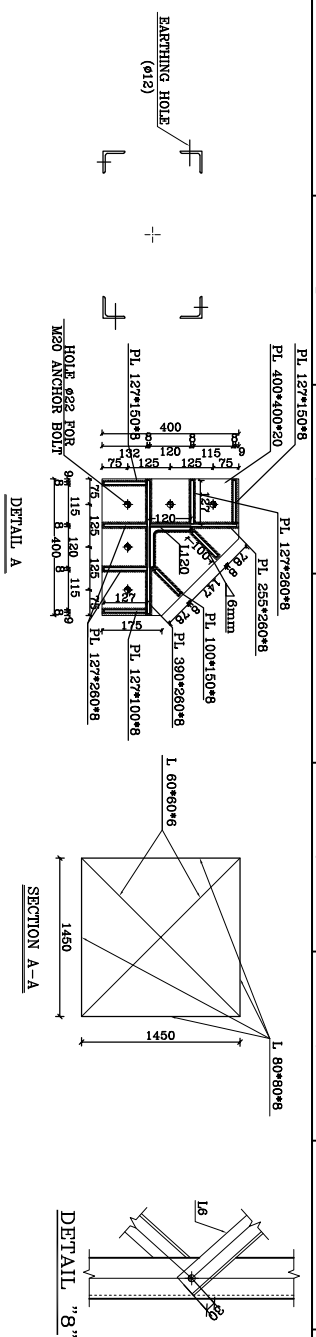


شرآه
SHARAGH CO.

Project: 100MW Solar Power Plant (SARCHESHME)

Title: GANTRY FOUNDATION DRAWING
FRONT VIEW
2SCG3 & 2SCG4 & 2SBG2

DOC NO.:		28P2-B-3MG-DWG-SUS-000000-CV-129		REV.	02
SCALE	SIZE	SHEET	05 OF 11	FORMAT	DWG
1/130	A3				



REFERENCE	
REFERENCE. TITLE	REFERENCE. No.
NOTES	

- 1- ALL DIMENTION ARE IN mm.
- 2- ALL DIMENTIONS AND DISTANCES SHALL BE CHECKED BY MANUFACTORERAND WORK-SHOP DWG. SHOULD BE BASED ON CHECKED VALUE.
- 3- CUTTING THE FLANGS ARE NOT ACCEPTABLE.
- 4- LEG DISTANCES AT BASE OF GANTRY ARE FROM BACK TO BACK OF LEG ANGLES.
- 5- "S" IS SHIELDWIRE ATTACHMENT POINT TO COLUMN OR GANTRY.
- 6- USE BOLT M16 GRADY 8.8, $f_u=8000 \text{ kg/cm}^2$ & $f_y=6400 \text{ kg/cm}^2$ FOR CONECTIONS.
- 7- NUMBER OF BOLTS IN OTHER CONNECTIONS THAT ARE NOT SHOWN IN THIS DRAWING ARE 1* M16 (HOLE $\phi 18$ (Φ) FOR M16).
- 8- S.S. SINGLE SHEAR D.S : DOUBLE SHEAR
- 9- FOR EACH BOLT: A NUT, A WASHER AND A STANDARD SPRING WASHER ARE NEEDED.

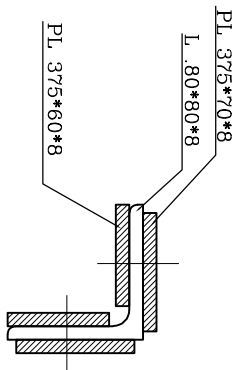
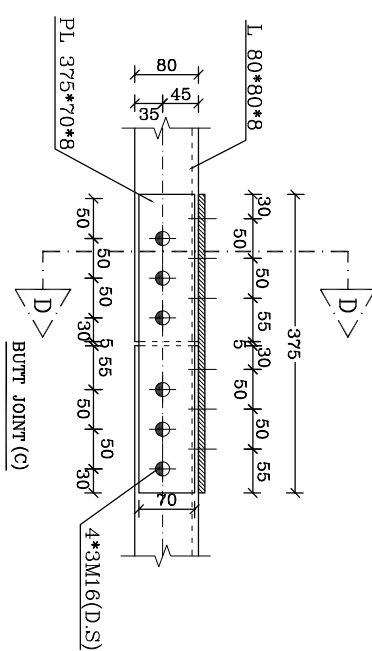
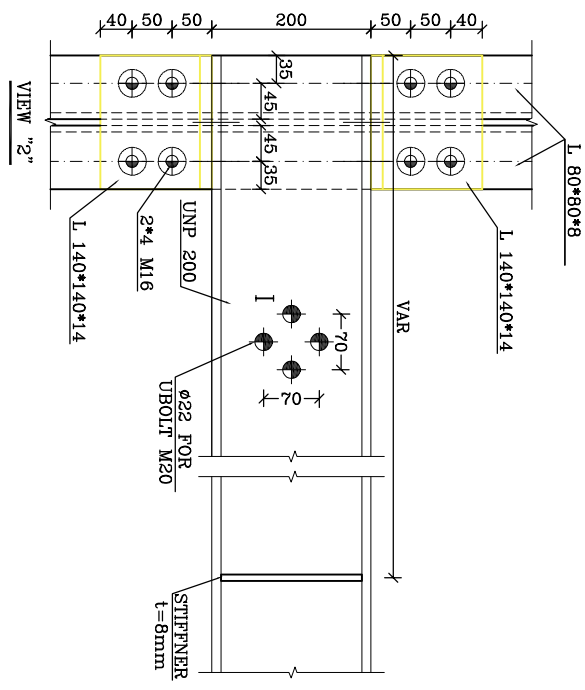
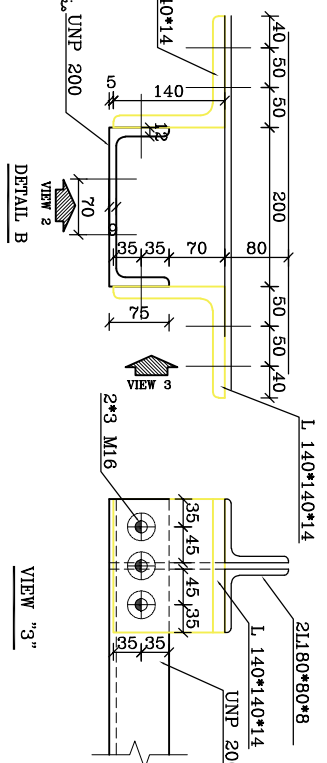
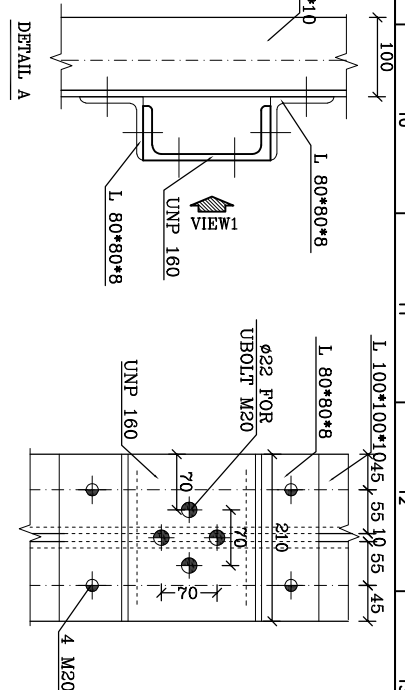
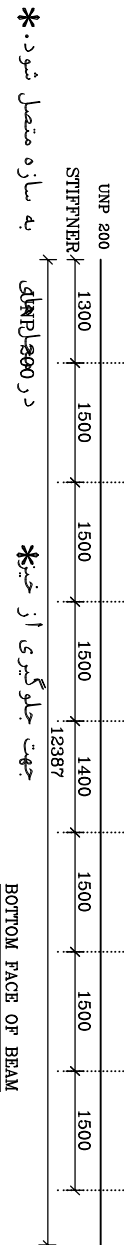
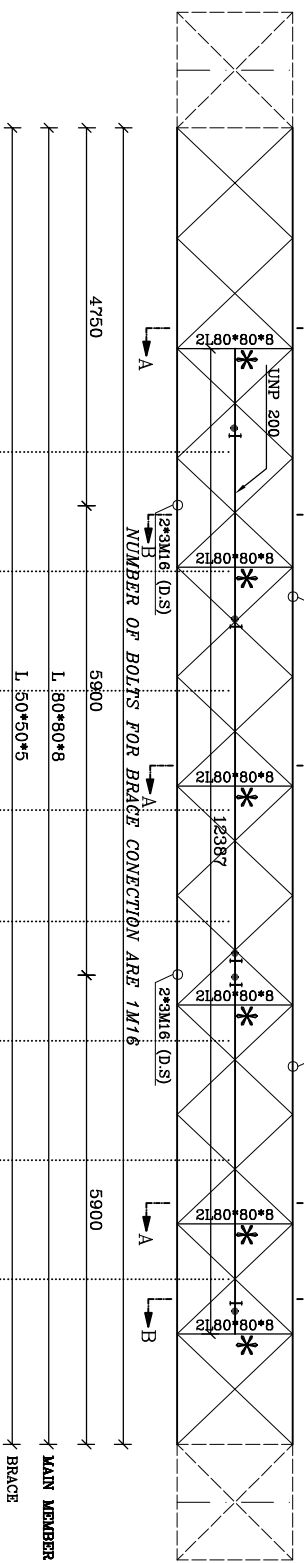
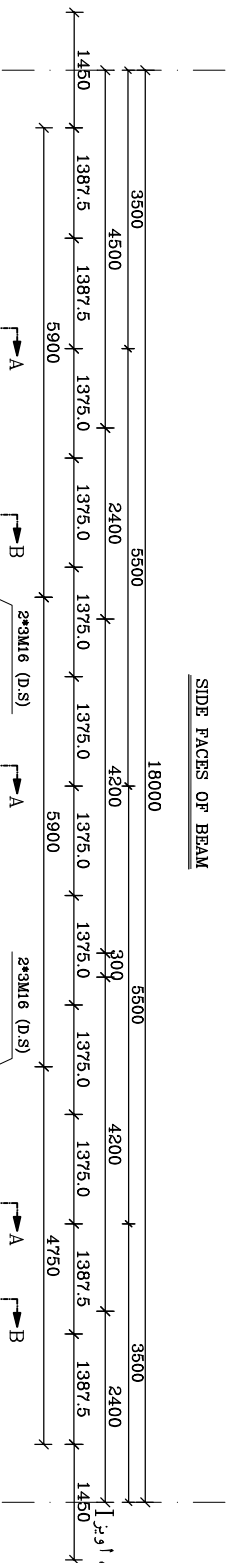
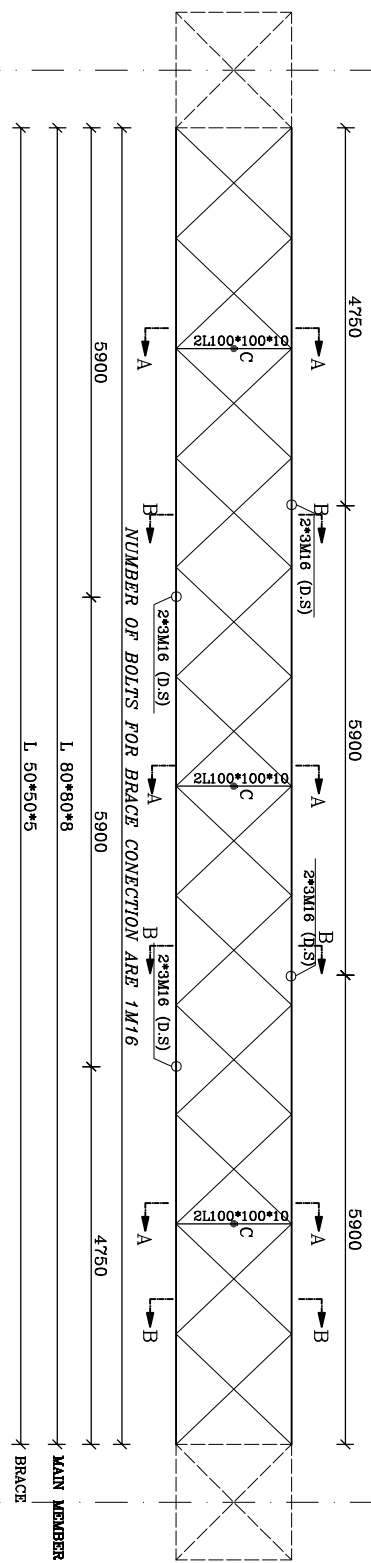
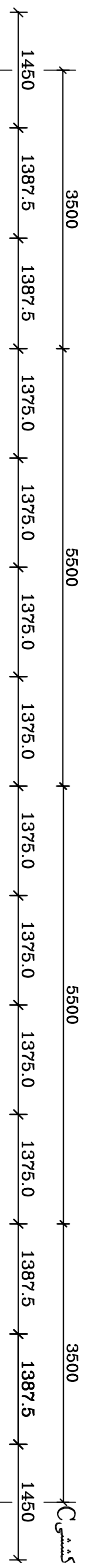
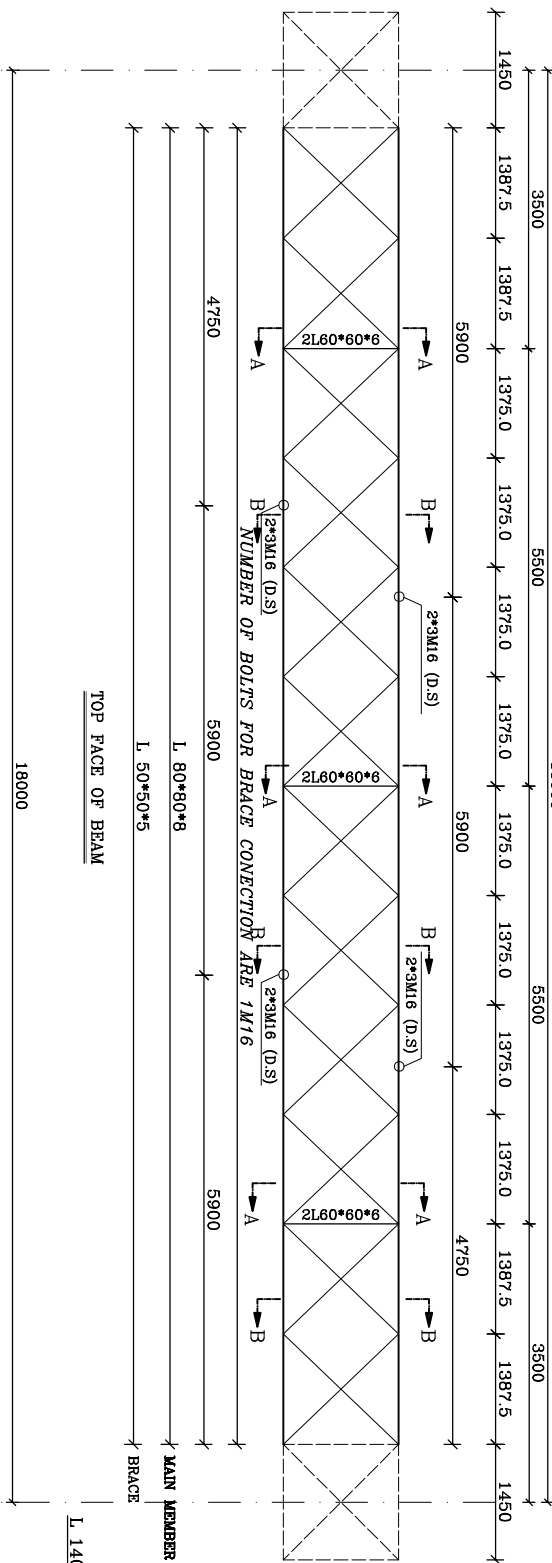
MATERIAL	TYPE	YIELD STRESS N/mm ²	STANDARD
STEEL	ST 37-2	2400	DIN 17100
BOLT	8.8	6400	DIN 934&931
NUT & WASHER	NUT	FLAT WASHER	SPRING WASHER
	DIN 934	DIN 125	DIN 128B

HOT-DIP GALVANIZED ASTA A123(FOR STEEL)
COVERING & A153(FOR BOLT,NUT,WASHER)

- ✦ M20-022
- ✦ M22-025
- ✦ M25-028
- ✦ M30-032

[illegible][illegible]

جهت نصب لاین تراپ و مقبره های کشتی و اویزی به مدرک لی اوت سکنین مراجعه شود .



	14	15	16
	REFERENCE		
REFERENCE. TITLE		REFERENCE. No.	

NOTES






























































































































































































































- 1- ALL DIMENTION ARE IN mm.
- 2- ALL DIMENTIONS AND DISTANSSES SHALL BE CHECKED BY MANUFACTOREAND WORK-SHOP DWG. SHOULD BE BASED ON CHECKED VALUE.
- 3- CUTTING THE FLANGES ARE NOT ACCEPTABLE.
- 4- LEG DISTANCES AT BASE OF GANTRY ARE FROM BACK TO BACK OF LEG ANGLES.
- 5- "S" IS SHIELDWIRE ATTACHMENT POINT TO COLUMN OF GANTRY.
- 6- USE BOLT M16 GRADE 8.8 ,Fu=8000 kg/cm2 & Fy=6400 kg/cm2 FOR CONNECTIONS.
- 7- NUMBER OF BOLTS IN OTHER CONNECTIONS THAT ARE NOT SHOWN IN THIS DRAWING ARE 1*M16 (HOLE ϕ 18 (Φ) FOR M16).
- 8- S.S. SINGLE SHEAR D.S : DOUBLE SHEAR
- 9- FOR EACH BOLT, A NUT, A WASHER AND A STANDARD SPRING WASHER ARE NEEDED.

MATERIAL	TYPE	YIELD STRESS σ_{yk} N/mm ²	STANDARD
STEEL	St 37-2	2400	DIN 17100
BOLT	8.8	6400	DIN 934&931
NUT & WASHER	NUT	FLAT WASHER	SPRING WASHER
	DIN 934	DIN 125	DIN 1289
HOT-DIP GALVANIZED ASTM A123(FOR STEEL) (COVERING: & A153(FOR BOLT,NUT,WASHER))			

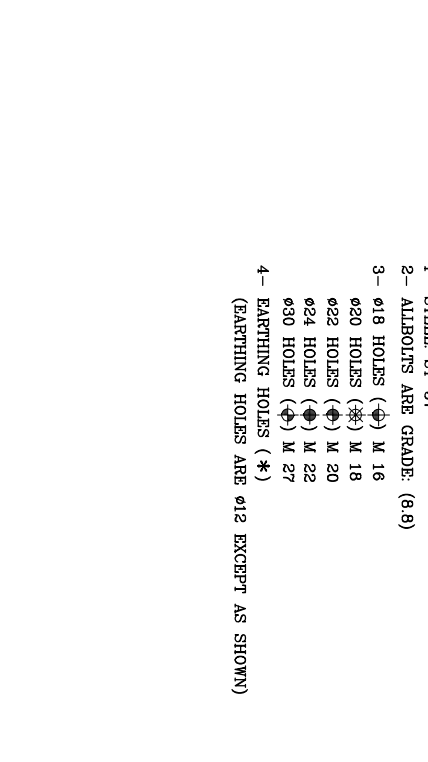
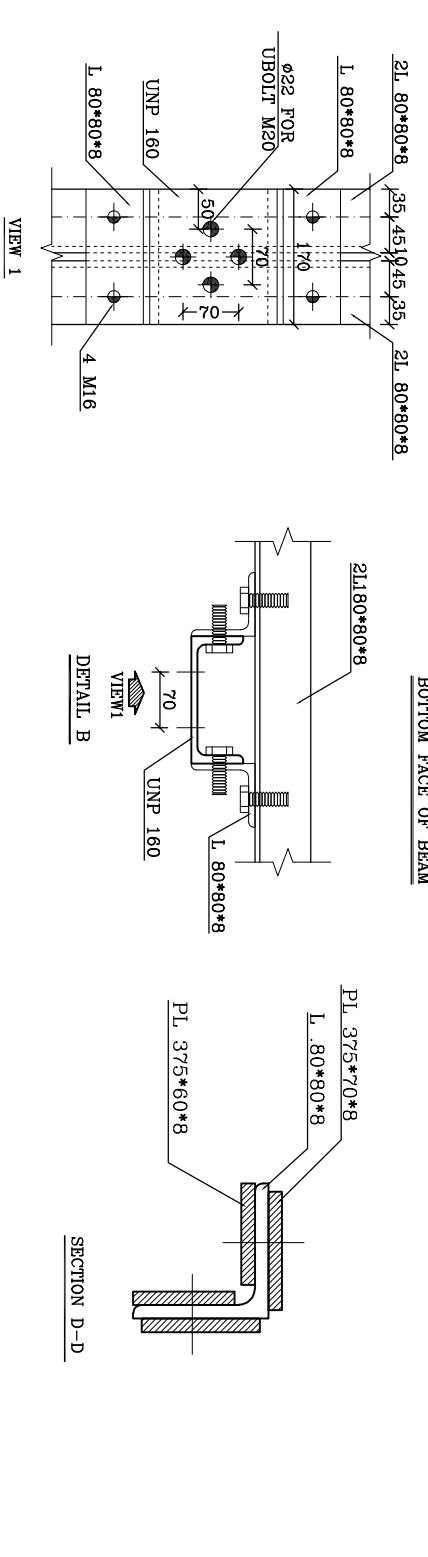
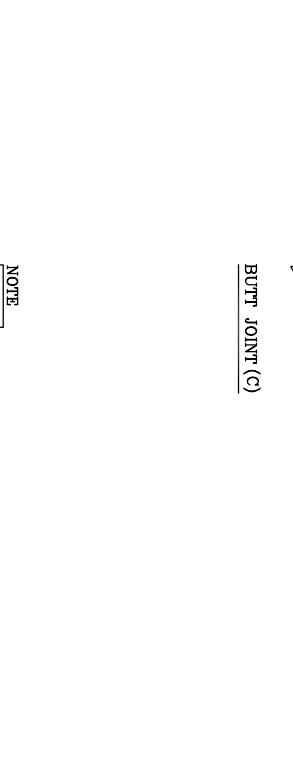
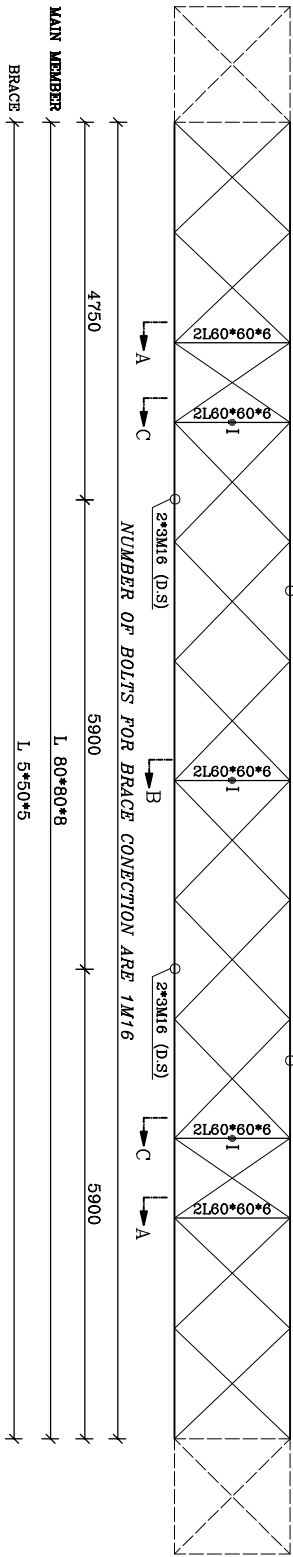
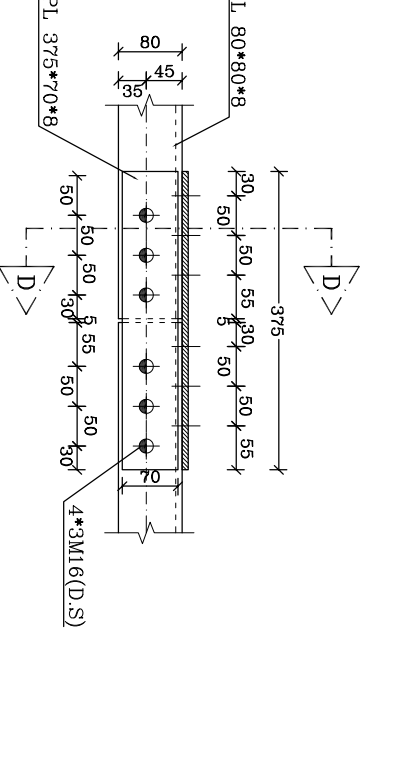
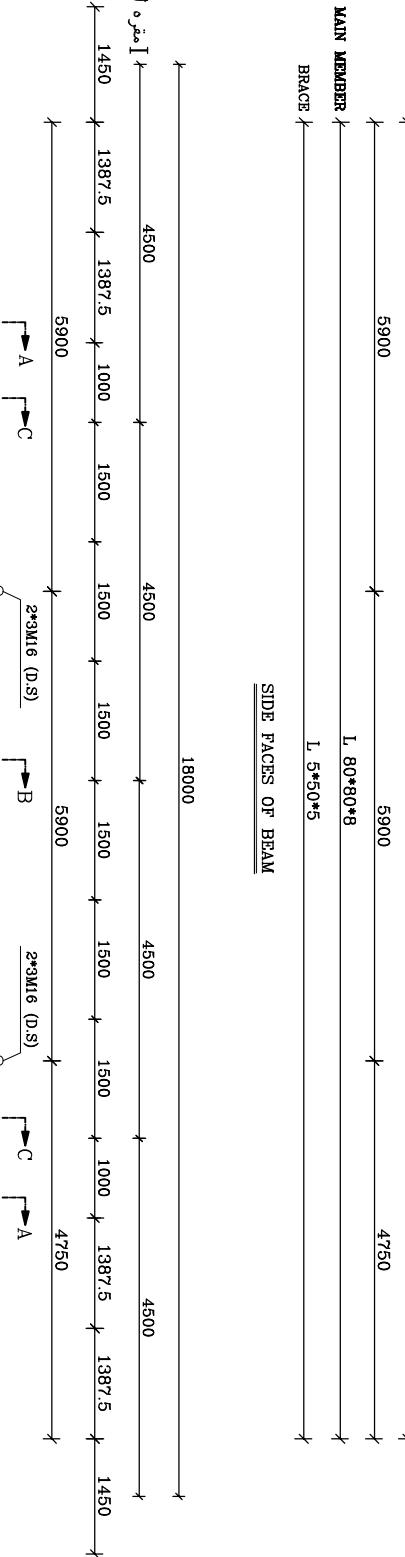
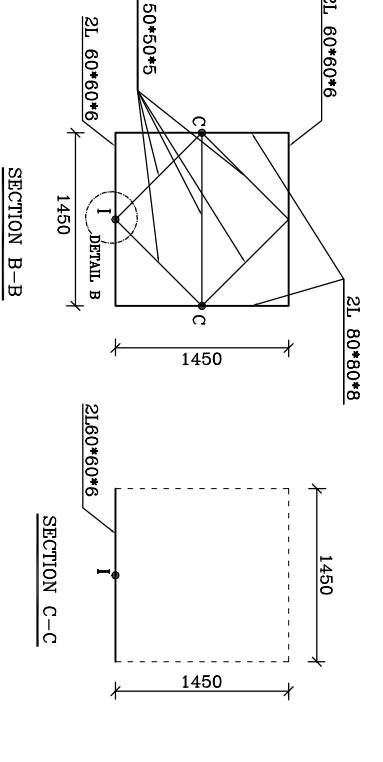
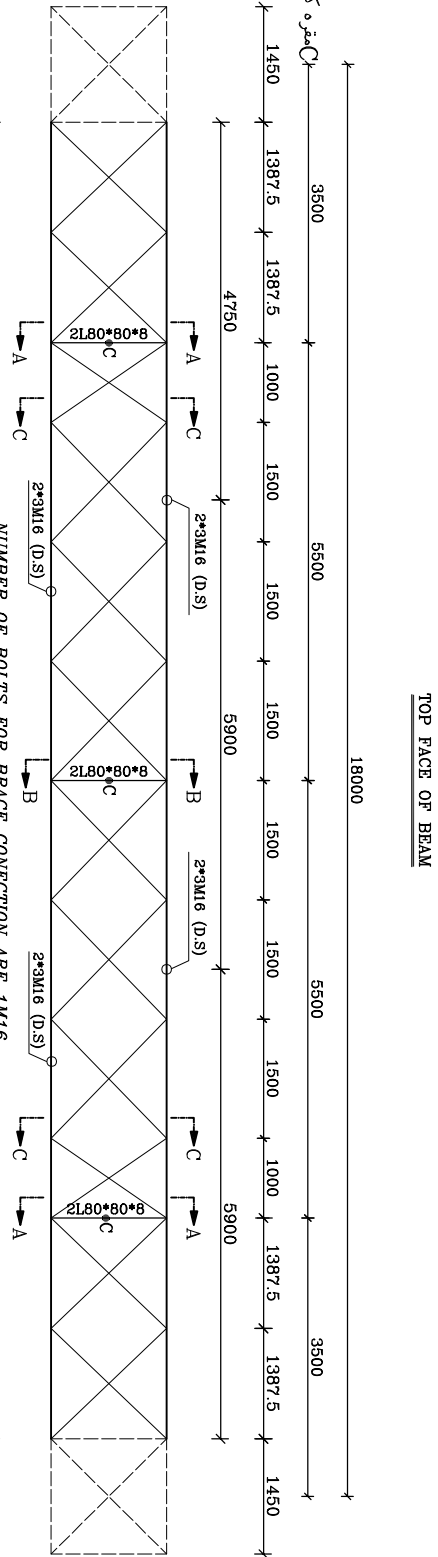
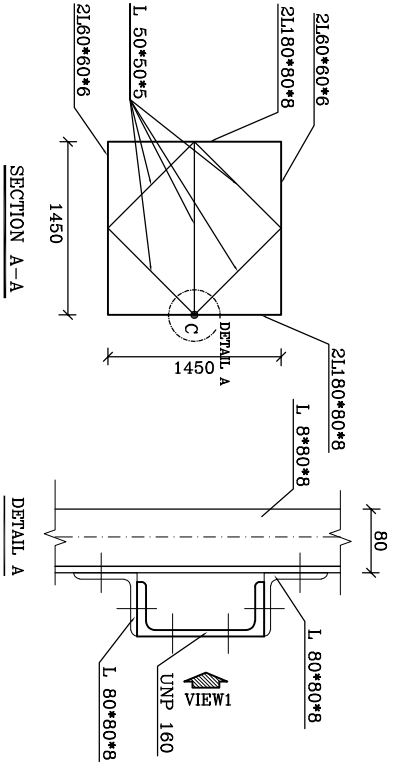
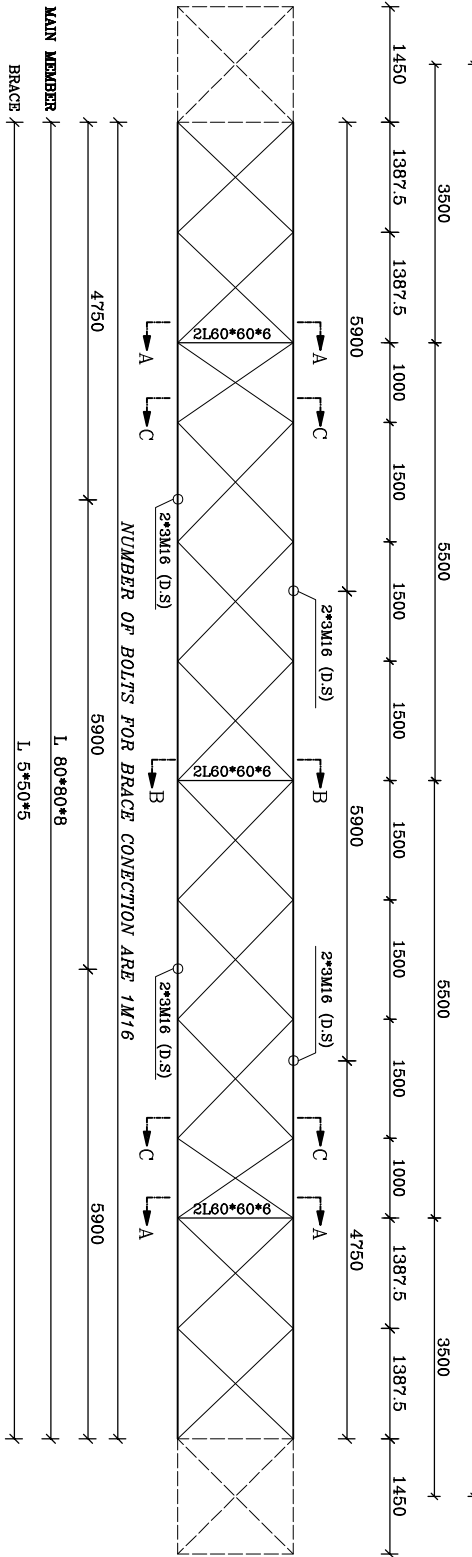
- ◆ M20—022
- ◆ M22—035
- ◆ M25—028
- ◆ M30—032

LEGEND

REV.	DATE	DESCRIPTION	FUNCTIONS		
			DESIGN	DEVELOP	TESTED
02	01/2026	ISSUE FOR APPROVAL	R.HAWPOUR	R.HAWPOUR	R.HAWPOUR
01	01/2026	ISSUE FOR APPROVAL	R.HAWPOUR	R.HAWPOUR	R.HAWPOUR
00	12/2025	ISSUE FOR APPROVAL	A.BRAUSTEIN	A.BRAUSTEIN	R.HAWPOUR

 MEXICO		 MEXICO	
 MEXICO		 MEXICO	
 MEXICO		 MEXICO	
 MEXICO		 MEXICO	
 MEXICO		 MEXICO	
 MEXICO		 MEXICO	
 MEXICO		 MEXICO	
 MEXICO		 MEXICO	
 MEXICO		 MEXICO	
 MEXICO		 MEXICO	
 MEXICO		 MEXICO	
 MEXICO		 MEXICO	
 MEXICO		 MEXICO	
 MEXICO		 MEXICO	
 MEXICO		 MEXICO	
 MEXICO		 MEXICO	
 MEXICO		 MEXICO	
 MEXICO		 MEXICO	
 MEXICO		 MEXICO	
 MEXICO		 MEXICO	
 MEXICO		 MEXICO	
 MEXICO		 MEXICO	
 MEXICO		 MEXICO	
 MEXICO		 MEXICO	
 MEXICO		 MEXICO	
 MEXICO		 MEXICO	
 MEXICO		 MEXICO	
 MEXICO		 MEXICO	
 MEXICO		 MEXICO	
 MEXICO		 MEXICO	
 MEXICO		 MEXICO	
 MEXICO		 MEXICO	
 MEXICO		 MEXICO	
 MEXICO		 MEXICO	
 MEXICO		 MEXICO	
 MEXICO		 MEXICO	
 MEXICO		 MEXICO	
 MEXICO		 MEXICO	
 MEXICO		 MEXICO	
 MEXICO		 MEXICO	
 MEXICO		 MEXICO	
 MEXICO		 MEXICO	
 MEXICO		 MEXICO	
 MEXICO		 MEXICO	
 MEXICO		 MEXICO	
 MEXICO		 MEXICO	
 MEXICO		 MEXICO	
 MEXICO		 MEXICO	
 MEXICO		 MEXICO	
 MEXICO		 MEXICO	
 MEXICO		 MEXICO	
 MEXICO		 MEXICO	
 MEXICO		 MEXICO	
 MEXICO		 MEXICO	
 MEXICO		 MEXICO	
 MEXICO		 MEXICO	
 MEXICO		 MEXICO	
 MEXICO		 MEXICO	
 MEXICO		 MEXICO	
 MEXICO		 MEXICO	
 MEXICO		 MEXICO	
 MEXICO		 MEXICO	
 MEXICO		 MEXICO	
 MEXICO		 MEXICO	
 MEXICO		 MEXICO	
 MEXICO		 MEXICO	
 MEXICO		 MEXICO	
 MEXICO		 MEXICO	
 MEXICO		 MEXICO	
 MEXICO		 MEXICO	
 MEXICO		 MEXICO	
 MEXICO		 MEXICO	
 MEXICO		 MEXICO	
 MEXICO		 MEXICO	
 MEXICO		 MEXICO	
 MEXICO		 MEXICO	
 MEXICO		 MEXICO	
 MEXICO		 MEXICO	
 MEXICO		 MEXICO	
 MEXICO		 MEXICO	
 MEXICO		 MEXICO	
 MEXICO		 MEXICO	
 MEXICO		 MEXICO	
 MEXICO		 MEXICO	
 MEXICO		 MEXICO	
 MEXICO		 MEXICO	
 MEXICO		 MEXICO	
 MEXICO		 MEXICO	
 MEXICO		 MEXICO	
 MEXICO		 MEXICO	
 MEXICO		 MEXICO	
 MEXICO		 MEXICO	
 MEXICO		 MEXICO	
 MEXICO		 MEXICO	
 MEXICO		 MEXICO	
 MEXICO		 MEXICO	
 MEXICO		 MEXICO	
 MEXICO		 MEXICO	
 MEXICO		 MEXICO	
 MEXICO		 MEXICO	
 MEXICO		 MEXICO	
 MEXICO		 MEXICO	
 MEXICO		 MEXICO	
 MEXICO		 MEXICO	
 MEXICO		 MEXICO	
 MEXICO		 MEXICO	
 MEXICO		 MEXICO	
 MEXICO		 MEXICO	
 MEXICO		 MEXICO	
 MEXICO		 MEXICO	
 MEXICO			

Project: 100MW Solar Power Plant (SARCHESHEM)				
Title:				
<p align="center"> GANTRY FOUNDATION DRAWING SINGLE LINE DRAWING OF GANTRY COLUMN TYPE 2SBG1 (No:2) </p>				
DOC NO.:	28P2-B-3MG-DWG-SUS-000000-CY-129			REV. 02
SCALE	SIZE	SHEET		FORMAT
1/95	A3	10 OF 11		DWG



REFERENCE	
REFERENCE. TITLE	REFERENCE. No.

NOTES

- ALL DIMENTION ARE IN mm.
- ALL DIMENTIONS AND DISTANSES SHALL BE CHECKED BY MANUFACTUREAND WORK-SHOP DWG. SHOULD BE BASED ON CHECKED VALUE.
- CUTTING THE FLANS ARE NOT ACCEPTABLE.
- LEG DISTANCES AT BASE OF GANTRY ARE FROM "S" IS SHIELDWIRE ATTACHMENT POINT TO COLUMN OF GANTRY.
- USE BOLT M16 GRADE 8.8 ,F_u=8000 kg/cm² & F_y=6400 kg/cm² FOR CONNECTIONS.
- NUMBER OF BOLTS IN OTHER CONNECTIONS THAT ARE NOT SHOWN IN THIS DRAWING ARE 1*M16 (HOLE ø18 (Φ) FOR M16).
- S.S :SINGLE SHEAR D.S : DOUBLE SHEAR
- FOR EACH BOLT: A NUT, A WASHER AND A STANDARD SPRING WASHER ARE NEEDED.

مدرک لی اوت سکتین

MATERIAL	TYPE	YIELD STRESS _y kg/cm ²	STANDARD
	STEEL	ST 37-2	DIN 17100
BOLT	8.8	6400	DIN 934&931
	NUT & WASHER	DIN 934	DIN 125

CUTTING: & A153(FOR BOLT,NUT,WASHER)

- M20-ø22
- M22-ø25
- M25-ø28
- M30-ø32

LEGEND

REV.	DATE	DESCRIPTION	DESIGN	DRAWN	CHECKED	APPROVED
02	01/2026	ISSUE FOR APPROVAL	R.KHAKPOUR	R.KHAKPOUR	F.NEMAKHT	R.KHAKPOUR
01	01/2026	ISSUE FOR APPROVAL	R.KHAKPOUR	R.KHAKPOUR	F.NEMAKHT	R.KHAKPOUR
00	12/2025	ISSUE FOR APPROVAL	A.BARASTEH	A.BARASTEH	F.NEMAKHT	R.KHAKPOUR

مومنکو ایران

Momenco Iran

شرآق

SHARAGH CO.

Project: 100MW Solar Power Plant (SARCHEHME)

Title: GANTRY FOUNDATION DRAWING SINGLE LINE DRAWING OF GANTRY COLUMN TYPE 2SRG2 (NO:6)

DOC NO.:		SCALE		SHEET		FORMAT	
28P2-B-3MG-DWG-SUS-000000-CV-129		A3		11 OF 11		DWG	